



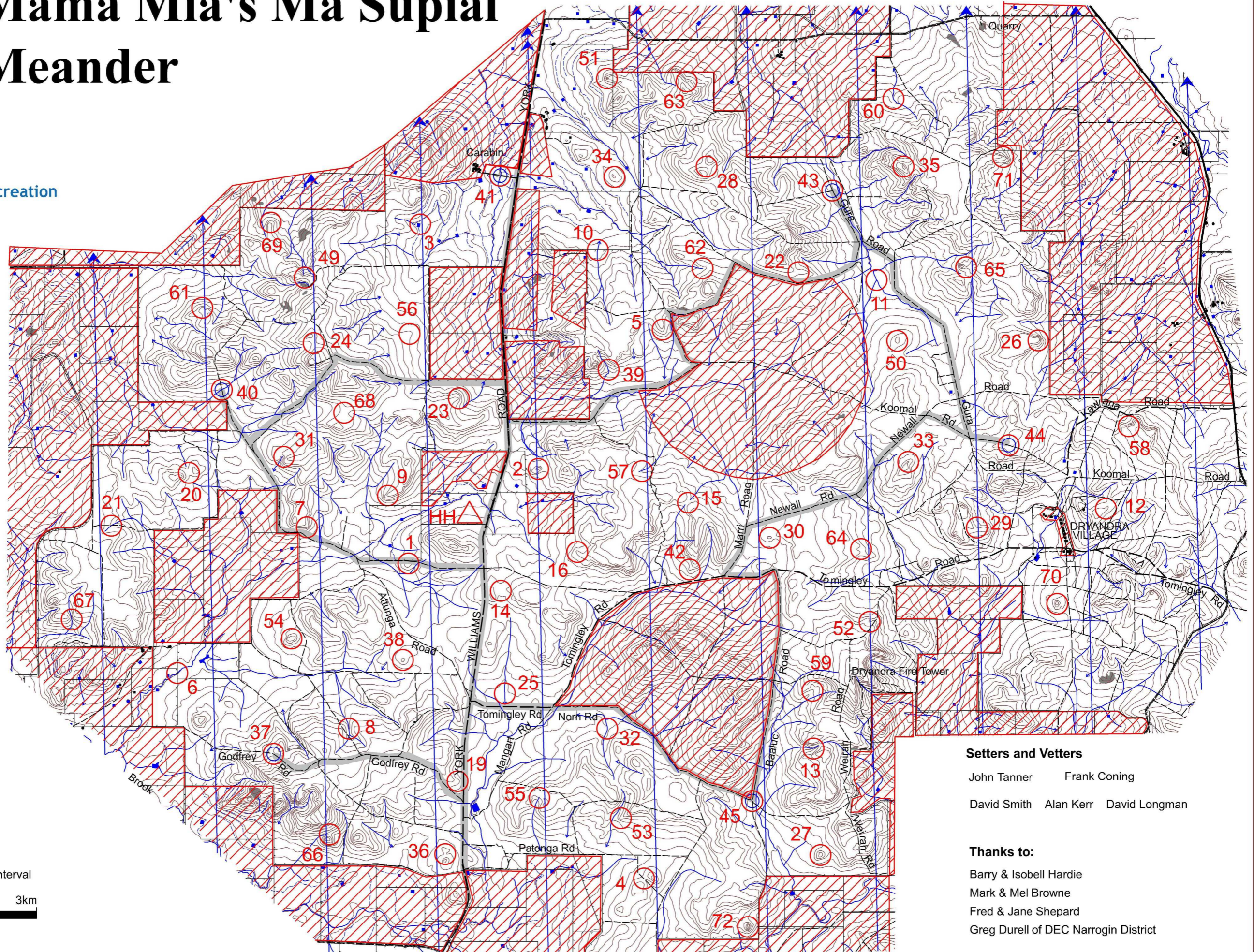
# Mama Mia's Ma Supial Meander

WARA Spring 12 Hour Rogaine 11th October 2008



## LEGEND

- Building
- Continuations
- Control
- Contours
- Dam
- Fence
- Hash House
- Magnetic North Line
- Out of Bounds
- Patrolled Road
- Road, Sealed
- Road, Major Gravel
- Road, Minor Gravel
- Watercourse
- Water Drop

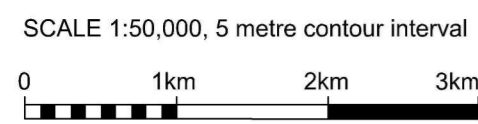


**Setters and Veters**

John Tanner      Frank Coning  
 David Smith    Alan Kerr    David Longman

**Thanks to:**

Barry & Isobell Hardie  
 Mark & Mel Browne  
 Fred & Jane Shepard  
 Greg Durell of DEC Narrogin District



This map was produced using OCAD 9 by the Western Australian Rogaining Association, wa.rogaing.asn.au. Data supplied by Landgate and used under copy licence 393/93. Possession of this map does not give right of entry to this area.

## "Mama Mia" Ma Supial Meander WARA Spring 12hr Rogaine 11th October 2008

No.	Description	Points	No.	Description	Points	Important Information
1	The Knoll	20	37	The Road Bend - 40m @ 193 deg <b>Water Drop</b>	60	
2	The Knoll	20	38	The Knoll	60	
3	The Dam - SE Corner	20	39	The Watercourse Bend	60	<b>Control Cards</b>
4	The Saddle	20	40	The Track / Watercourse Junction - 40m @35 deg <b>Water Drop</b>	60	From 0930 Saturday
5	The Spur	20	41	Driveway / Watercourse Junction - 40m @ 223 deg <b>Water Drop</b>	60	
6	Just East of The Fence / Watercourse Junction	20	42	The Spur	60	<b>Briefing</b>
			43	The Track Junction - 50m @ 65 deg <b>Water Drop</b>	60	0950 Saturday
7	The Spur	30	44	The Spur / Road Intersection - 55m @ 27 deg <b>Water Drop</b>	60	
8	The Gully	30	45	The Road Junction (Sth) - 60m @ 55 deg <b>Water Drop</b>	60	<b>Start</b>
9	The Spur	30	46			1000 Saturday
10	The Watercourse / Track Junction - 50m @ 189 deg	30	47			
11	The Water Course Junction	30	48			<b>Finish</b>
12	The Spur	30				2200 Saturday
			49	The Saddle	70	
13	"A" Watercourse Junction	40	50	The Knoll	70	<b>Hash House</b>
14	The Broad Saddle	40	51	"A" Rocky Knoll	70	Opens at 1600 Sat
15	The Saddle	40	52	Head of "A" Watercourse	70	Closes about 2230Sat
16	The Spur	40	53	The Spur	70	
17			54	The Knoll	70	<b>Sunset</b>
18						- Saturday 1821
19	The Spur	40	55	Head of the Gully	80	<b>Sunrise</b>
20	The Saddle	40	56	The Broad Spur	80	
21	The Track / Indistinct Watercourse Junction	40	57	Head of the Watercourse	80	
22	"A" Saddle	40	58	Head of "A" Gully	80	
23	The Spur - South Side	40	59	"A" Watercourse Junction	80	<b>Moonrise</b>
24	The Saddle	40	60	The Watercourse Bend	80	- Saturday 1444
						<b>Moonset</b>
25	The Watercourse	50	61	"A" Knoll	90	- Sunday 0317
26	The Spur	50	62	"A" Watercourse Bend	90	
27	The Knoll	50	63	Head of "A" Watercourse	90	<b>Late Penalty</b>
28	The Saddle	50	64	The Gully	90	
29	Head Of The Gully	50	65	The Saddle	90	10 points per minute
30	The Broad Knoll	50	66	The Saddle	90	or part minute
31	"A" Watercourse Junction	50				
32	The Watercourse Bend	50	67	The Watercourse	100	
33	The Spur	50	68	The Broad Saddle	100	
34	The Knoll	50	69	"A" Knoll	100	
35	The Knoll	50	70	The Knoll	100	
36	The Saddle	50	71	The Spur	100	
			72	The Knoll	100	<b>Controls Used</b>
						67
	<b>Patrolled Roads:</b> York - Williams Rd, Godfrey Rd, Norn Rd, Baaluc Rd, Newall Rd, Gura Rd, and others as shown on map			<b>Water Drops:</b> At or near controls 37, 40, 41, 43, 44, 45		
						<b>Total Points</b>
						3880